

Community

ENGAGEMENT REPORT

Tufts Cove & Elizabeth River
Nova Scotia, Canada & Virginia, USA

PLANETARY

2025

FOREWORD

Innovation is not born in isolation. It begins where science meets community, where curiosity meets humility, and where trust is earned, not assumed. At Planetary, this is the space where our work begins each day.

Our progress is measured in more than just tonnes of carbon removed. It is reflected in First Nations and Elders offering guidance, in site visits that became long conversations, in fishers sharing lived experience, and in communities beginning to imagine futures that feel possible and shared.

At Tufts Cove, we witnessed innovation strengthened through collaborations. When the Confederacy of Mainland Mi'kmaq (CMM) shared their wisdom and kind words for our offtake last year, we felt the deep power of community support. The blessings shared by community members at our 'milestones celebration' were reminders that when climate action is rooted in transparency, trust, and reciprocity, we move further together. Delivering the world's first verified OAE credits wasn't just a scientific and business milestone, but a reflection of the community backing.

Along the Elizabeth River in Virginia, we stood with environmental groups, educators, trail advocates, policymakers, and residents who care deeply about their waterways. We created space for dialogue, not because agreement is guaranteed, but because progress requires presence and a willingness to return to the table. The support and encouragement we received especially from the Chesapeake Bay Foundation (CBF) and the Elizabeth River Trail Foundation (ERTF) reminded us that communities want to see this work succeed.

I extend my heartfelt thanks to every First Nation, community member and organization that has been part of this journey. Your questions strengthen our work, and your trust is something we strive to earn every day. This report isn't just a record of activities, it is a testament to shared learning and a promise to keep improving, together. It reflects relationships and shared dreams. Carbon may be the metric, but trust, collaboration, and stewardship are the legacy we seek to create.

With gratitude from Planetary,



Diana Philip
Vice President, Community & Govt Relations



Voices that guide and inspire us...



“As Mi’kmaw people, our responsibility to the ocean and environment is rooted in generations of knowledge and care. We’re encouraged to see innovative climate solutions, like those being developed by Planetary, approached with attention to both science and community. We congratulate Planetary and wish them continued success.”

Jim Hepworth, CEO of Business Development and Social Enterprises, Confederacy of Mainland Mi’kmaq (CMM), Nova Scotia



“Ulnooweg is proud to have worked with planetary technologies on the joint learning opportunity initiative. Through this collaboration we have explored how innovative ocean alkalinity enhancement projects can inform and support Indigenous-led conservation priorities.”

Christopher Googoo, Chief Operating Officer, Ulnooweg, Nova Scotia



“We’re thrilled at the work Planetary is doing – including in our backyard along the Elizabeth River in Virginia. We’re excited to continue our strong partnership with Planetary and can’t wait to see what we can accomplish together moving forward.”

April Strickland, Director of Major Giving, Hampton Roads, Chesapeake Bay Foundation (CBF), Virginia



Voices that guide and inspire us...



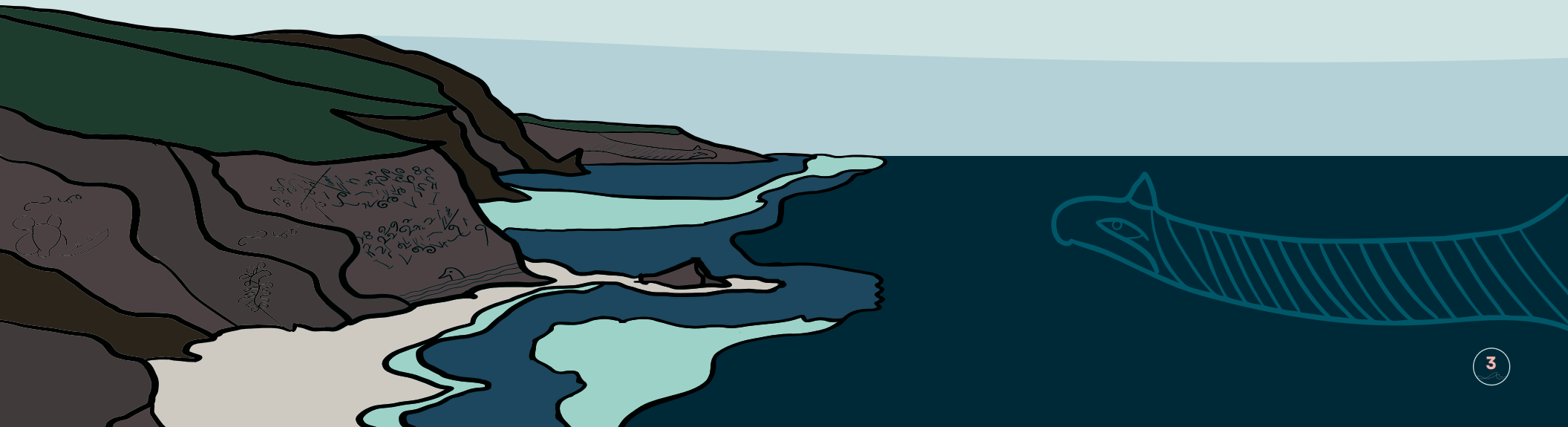
66 *We are so grateful for the partnership and collaboration you have brought to ERT with your incredible work. It's such a gift to know our community is being invested in this way.* 99

Kindra McDonald Greene, Executive Director,
Elizabeth River Trail Foundation, Virginia



66 *I am excited to learn more about the approach of Ocean Alkalinity Enhancement (OAE) by Planetary and how it could represent a significant step forward in the fight against climate change. This proposed solution could contribute to the urgent carbon removal needs and benefit coastal ecosystems.* 99

Honourable Julie Dabrusin,
Minister of Environment and Climate Change, Canada





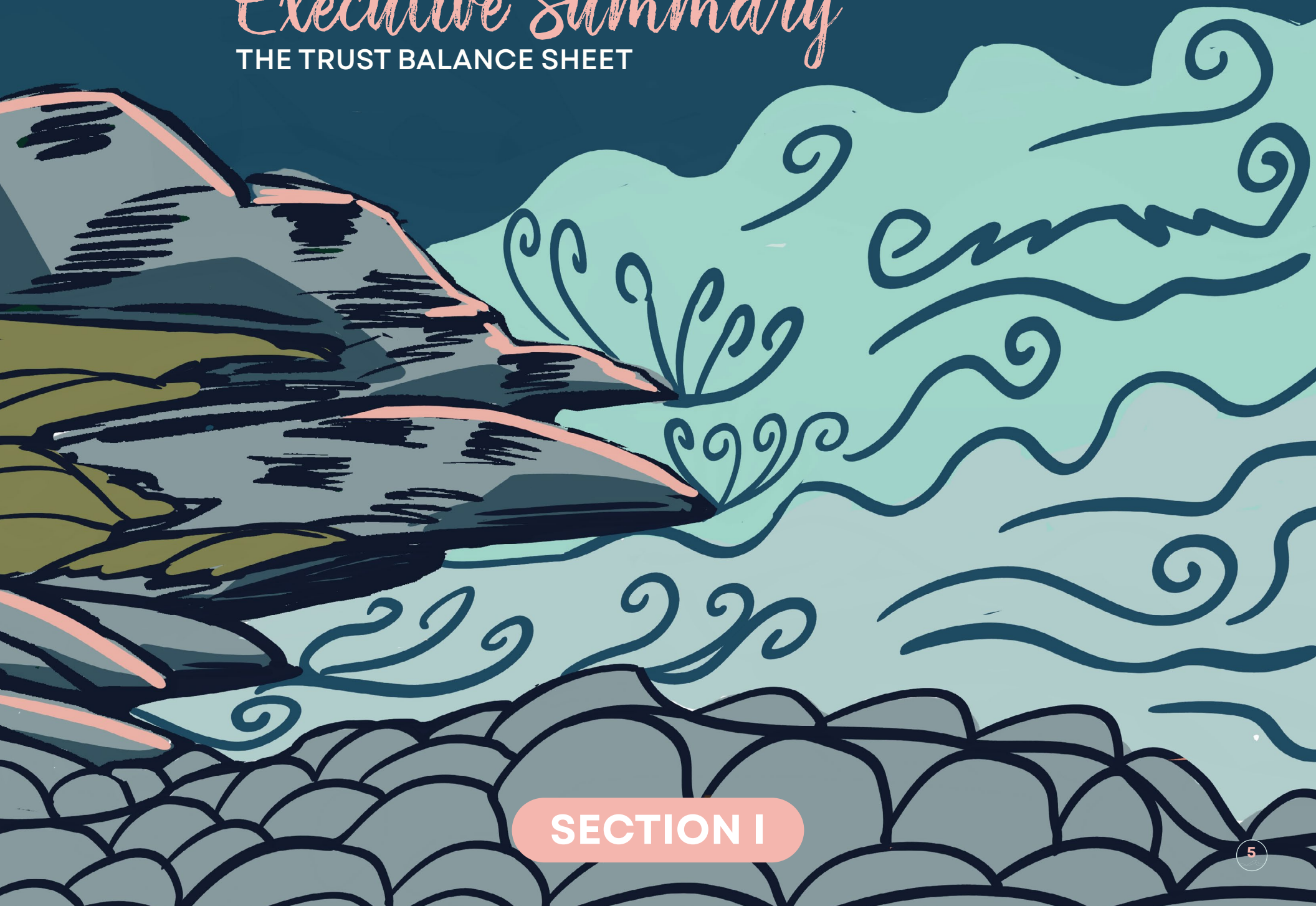
PLANETARY

TABLE OF CONTENTS

Foreword	1
Voices that Guide and Inspire Us	2
SECTION I: Executive Summary (The Trust Balance Sheet)	5
SECTION II: Community Engagement Framework	8
SECTION III Tufts Cove, Nova Scotia, Canada	10
Land Acknowledgement	11
Regional Context	12
A. Indigenous Governance & Formal Partnership Pathways	13
B. Shared Environmental Governance & Feedback Integration	17
C. Community Co-Creation & Benefits	19
D. Local Economic Contribution	20
E. Institutional Recognition at the Legislature	20
F. Transparency & Public Access	21
G. External Verification & Due Diligence	22
Planetary Milestones Community Celebration	23
SECTION IV: Elizabeth River, Norfolk, Virginia	24
Land Acknowledgment	25
Regional Context	26
A. Independent Community Oversight	27
B. Community Collaboration & Oversight	28
C. Engagement with Local Government & Civic Bodies	30
D. Feedback Integration	32
E. Local Economic Contribution	32
F. Outreach & Public Access	33
SECTION V: Digital Transparency and Knowledge Sharing	36
SECTION VI: Community Engagement as Organizational Practice	39
Acknowledgments	42
El'taqati'kw Digital Studio: Indigenising the Report	43

Executive Summary

THE TRUST BALANCE SHEET



SECTION I



EXECUTIVE SUMMARY

THE TRUST BALANCE SHEET

In 2025, Planetary Technologies moved beyond consultation toward co-creation. We did not simply inform communities about our coastal OAE climate solution. We worked alongside them to shape those solutions, from shellfish monitoring at Elizabeth River in Virginia to a co-produced education program with the Mi'kmaq Native Friendship Centre in Nova Scotia. We prioritised meeting communities where they are, in the spaces and format they preferred, including presenting at the Pitupaq gathering in Nova Scotia, at the Elizabeth River Project's Environmental Technical Policy Committee meeting in Virginia and through informal discussions over tea. Roughly **600 distinct community members** directly engaged with our work, bringing their questions, local knowledge, and independent oversight. This report is their ledger.

2025 Highlights

At Planetary we measure success not by activity, but by trust earned and relationships built with communities. These metrics reflect not only the scale of our work but, more importantly, its depth, with an ecosystem of trust across Indigenous nations, community and civil society groups, environmental stewards, and every voice that's connected to the coastal waters.

Economic Benefits for local communities:

Over **3 million CAD** injected into local economies in Nova Scotia and Virginia (2024–2025).

Indigenous Engagement & Oversight:

With all **13 Mi'kmaq First Nations** through representative groups including the Confederacy of Mainland Mi'kmaq (CMM). Also, co-developed educational programs and land acknowledgment.



Transparency & Engagement:**40+** community site visits**200+** organizations engaged**40+** informal tea-table discussions**75+** presentations including at community gatherings, commissions, technical committees**Digital engagement:**

Through our website, publications, and social media platforms, we see **200k+ digital** interactions annually. We kickstarted a special speaker series to highlight the work of community leaders in both places.

Community Feedback integration:

We implemented a lobster larvae ecotoxicity testing for Tufts Cove and shellfish monitoring at Elizabeth River in direct response to the input provided by environmental non-profit groups and local fisheries.

Skill Development:

Advanced planning for youth internship pathways to create long-term local talent pipelines.

Verification & Accountability:

Achieved Partnership Accreditation in Indigenous Relations (PAIR) Phase 1 'committed status' with independent verification through the Canadian Council for Indigenous Business (CCIB). Submit community engagement tracker for Isometric's verifier (350Solutions) on a quarterly basis. Planetary cleared Frontier's independent community due diligence process, supporting execution of the offtake agreement. Certain suppliers and partners have also undertaken their own independent due diligence on Planetary's community engagement approach.

Legislative Recognition & Public Accountability:

Recognized at the Nova Scotia Legislature by Minister of Environment Timothy Halman for positioning the province as a leader in climate solutions, reinforcing our commitment to transparent operations before government and community alike.



Legislative Recognition in October 2025:
Planetary team with Hon. Minister Timothy Halman
at the Nova Scotia Legislature

Community

ENGAGEMENT
FRAMEWORK



SECTION II

COMMUNITY

ENGAGEMENT FRAMEWORK

Planetary grows through genuine partnership, not one-time consultation. Our engagement approach is informed by widely recognized public participation principles, including concepts from the International Association for Public Participation (IAP2) Spectrum. This approach inspires and challenges us to move beyond simply informing communities, and instead work towards building enduring and trust-based relationships.

While our engagement is guided by shared principles, it is always tailored to local realities. Community identification, engagement styles, and priorities differ between regions, and our approach is shaped by the cultural, social, and economic contexts of the communities we work alongside. Because each region brings unique knowledge and priorities, the best climate solutions emerge when science and community knowledge are combined. We believe that being a true ally means designing engagement where local voices shape outcomes and shared prosperity is intentional, not incidental.

Our engagement process is not merely a communications exercise, it constitutes governance. It ensures participation is purposeful, expectations are clear, and trust is strengthened over time. We invest in local jobs, training, and community capacity because our success is tied to the economic and social health of the communities hosting us. Shared power and transparency ground everything we do. Communities guide our work based on their environmental

Engagement Framework in Practice

Inform:

Providing open access to our work through multiple means so communities can understand our work.

Consult:

Maintaining two-way communication and gathering feedback

Involve:

Incorporating community insights into projects including environmental monitoring programs, safeguards, and research priorities.

Collaborate:

Working together as partners to develop shared learning and awareness programs, research collaborations, skilling and development initiatives, environmental stewardship activities and more.

Empower:

Advancing towards community oversight, shared governance structures, long-term economic participation and benefits.

[International Association for Public Participation (IAP2), Spectrum of Public Participation.]

and cultural values, and we earn that trust with open data, accountability, and tangible local economic and social benefits. By aligning our commitments with our actions, we cultivate partners rather than audiences. This exchange of wisdom, influence, and shared prosperity creates solutions more resilient and legitimate than any single perspective could achieve alone.

Tufts Cove,
NOVA SCOTIA



SECTION III

TUFTS COVE, NOVA SCOTIA, CANADA

Land Acknowledgement

We at Planetary acknowledge that we operate in Mi'kma'ki, the ancestral and unceded territory of the Mi'kmaw Nation. We further acknowledge and affirm that the Peace and Friendship treaties will one day lead the Nation to economic independence and an unbridled prosperity that even the original signatories could never have imagined was possible. The Mi'kmaq truly stand on the shoulders of giants.

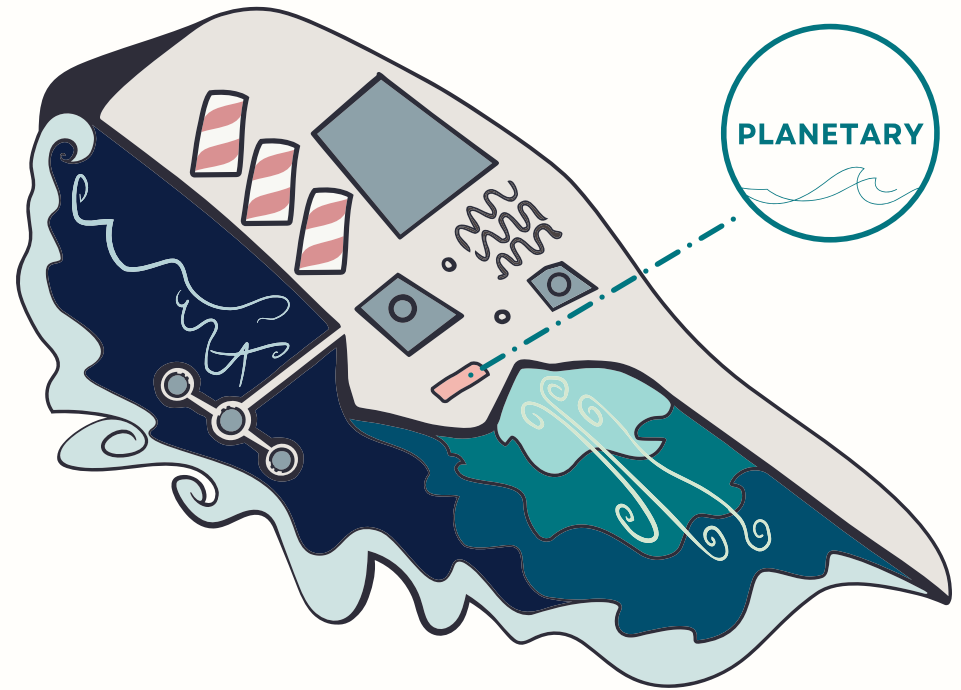
It is not enough to simply acknowledge where we are but who we are. At Planetary we are a dedicated team of professionals who are passionately committed to doing everything we can to fight climate change, which is undeniably the greatest challenge facing humanity today. We acknowledge that the Indigenous peoples of the world have been raising the alarm about climate change long before it was ever considered a threat.



**Nova Scotia Power (NSPI),
Tufts Cove**



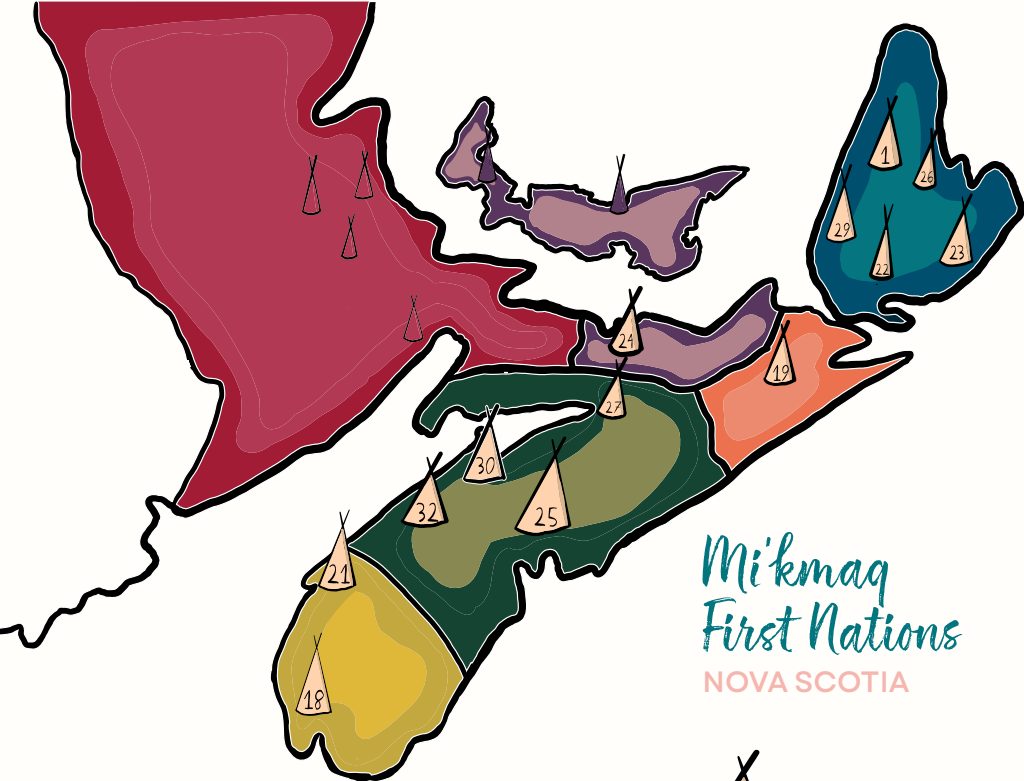
**Planetary at NSPI,
Tufts Cove**



We are acknowledging today that Planetary is committed to working in partnership with the Mi'kmaq to understand their perspective, knowledge and commitment to the cause of climate change by adopting and utilizing the concept of Two-Eyed Seeing in our project. As well, we are committed to transferring the western sciences we employ in our project to the Nation so that they can work with us, shoulder to shoulder.

Wela'lin.

**Created by Eric Christmas and received appreciation
from Mi'kmaq Native Friendship Centre (MNFC)**



- | | | |
|--------------|-------------------|---------------------|
| 1 Wagmatcook | 29 We'kqma'g | 25 Sipekne'katik |
| 26 Membertou | 19 Pqitnkek | 30 Glooscap |
| 23 Eskasoni | 24 Pictou Landing | 32 Annapolis Valley |
| 22 Potlotek | 27 Millbrook | 21 Bear River |
| | | 18 Acadia |

MI'KMAW DISTRICTS

- | | | |
|-----------|--------------------|---------------|
| SIKNIKT | EPEKWITK AQ PIKTUK | SIPEKNE'KATIK |
| UNAMA'KIK | ESKIKEWA'KIK | KESPUKWITK |

REGIONAL CONTEXT

Planetary's Tufts Cove project operates continuously at the Tufts Cove Generating Station, Nova Scotia Power (NSPI) facility, within Mi'kma'ki, the ancestral and unceded territory of the Mi'kmaw Nation and is conducted in partnership with Dalhousie University.

The land-based component of the project is located within the traditional territory of Millbrook First Nation. Given the coastal and marine dimensions of the project, Planetary has prioritized engagement across all 13 Mi'kmaw First Nations, notably through representative bodies and leadership tables including the Confederacy of Mainland Mi'kmaq (CMM), Pitupaq, CEPI, UNIR, Wskijinu'k Mtmo'taqnuow Agency (WMA), and Atlantic Policy Congress (APC).

While Indigenous engagement remains foundational to our work, Planetary's community engagement strategy is intentionally broad and equity focused. We are actively working towards building, engaging and collaborating with equity-focused organizations, youth groups, fisheries, environmental stewards, multicultural associations, residents, regional municipal-First Nation alliances, and local government.

From the outset, engagement in Tufts Cove, Nova Scotia was not framed as consultation alone; it was structured to evolve toward shared governance, institutional collaboration, and benefit-sharing.

A. INDIGENOUS GOVERNANCE & FORMAL PARTNERSHIP PATHWAYS

Confederacy of Mainland Mi'kmaq (CMM)

In 2025, Planetary strengthened its relationship with the Confederacy of Mainland Mi'kmaq (CMM), the tribal council representing eight out of thirteen Mi'kmaq First Nation communities in Nova Scotia.

A full day site visit and discussions led to an invitation from CMM to present to the Board of Chiefs representing the 8 communities, the start of community benefits conversations, and to the exploration of collaborative initiatives. These milestones marked an important shift from dialogue to shared action.

When CMM visited Planetary, it was more than a site tour; it was laughter, deep conversation, thoughtful suggestions, curiosity, and connection. We discussed openly about how Planetary's work could grow in ways that reflect shared values and benefit communities together. There



was a genuine sense of optimism, the kind that signals that meaningful things are beginning. We were also honoured to have received CMM's support later in the year for the Frontier Offtake agreement for the sale of credits.



The Two-Eyed Seeing Governance Framework

Planetary advanced the formalization of a Two-Eyed Seeing governance model rooted in the concept **designed by First Nations Elder Dr. Albert Marshall**. This model seeks to integrate Mi'kmaw knowledge systems with Western science in project planning, monitoring, and decision-making.

In 2025, groundwork was laid for a formal advisory structure that will facilitate quarterly knowledge-sharing roundtables, create pathways for reciprocal knowledge transfer and institutionalize Indigenous input and values into environmental and operational decisions. This framework moves beyond advisory participation toward shared oversight. The framework also received blessings from Dr. Albert Marshall.

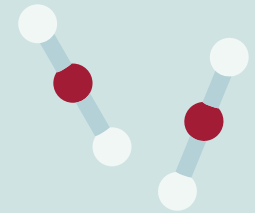


Planetary's Two-Eyed Seeing Framework Received Blessings from Dr. Albert Marshall



66 *Planetary Technologies' approach to carbon capture is truly revolutionary. The Tuft's Cove project represents a new and exciting tool that Nova Scotians can be proud is homemade.* 99

Eric Christmas
(Membertou Nation) & Planetary's Senior Advisor Indigenous Relations



Mi'kmaw Economic Benefits Office (MEBO)- High School Education Program Collaboration

Planetary became a member of their Pathways in Technology Early College High School (P-TECH) committee to develop pathways for OAE education.

P > TECH

Community & First Nations Collaboration with Ulnooweg

Through the Joint Learning Opportunity (JLO) initiative, in partnership with Carbon to Sea and COVE, **Planetary supported Ulnooweg** in advancing research that connected ocean alkalinity enhancement with their oyster restoration in Prince Edward Island. Importantly, Ulnooweg defined the research priority, ensuring the work aligned with Indigenous led conservation objectives, while Planetary provided support. In addition, Planetary proudly sponsored Ulnooweg's Dreamers Gala, reinforcing our broader support for Indigenous entrepreneurship, leadership, and economic advancement across Atlantic Canada.



Ulnooweg Development Group & Lennox Island, Prince Edward Island, Canada, discuss Ocean Alkalinity Enhancement



“Ulnooweg is proud to have worked with Planetary Technologies on the joint learning opportunity initiative. Through this collaboration we have explored how innovative ocean alkalinity enhancement projects can inform and support Indigenous-led conservation priorities.”

Christopher Googoo,
Chief Operating Officer, Ulnooweg, Nova Scotia



PAIR Certification & Verification

Planetary formally entered the Partnership Accreditation in Indigenous Relations (PAIR) program through the Canadian Council for Indigenous Business. Our participation in PAIR signals our multi-year commitment to measurable institutional improvement in Indigenous relations. The PAIR program is an independent accreditation framework that verifies corporate performance in Indigenous relations through structured criteria and third-party review.

PAIR requires independent verification of the company's governance structures, leadership accountability, policy frameworks, long-term Indigenous relationship building practices.

Planetary is PAIR committed and as of Feb 2026 has advanced to phase 2. The advancement is not self-declared but externally verified and bestowed by CCIB.



PAIR COMMITTED
PARTNERSHIP ACCREDITATION
IN INDIGENOUS RELATIONS

Phase 1 → Phase 2 → Phase 3



PAIR BRONZE
PARTNERSHIP ACCREDITATION
IN INDIGENOUS RELATIONS



PAIR SILVER
PARTNERSHIP ACCREDITATION
IN INDIGENOUS RELATIONS



PAIR GOLD
PARTNERSHIP ACCREDITATION
IN INDIGENOUS RELATIONS

The assessment report from the verifier highlighted these key observations about Planetary:

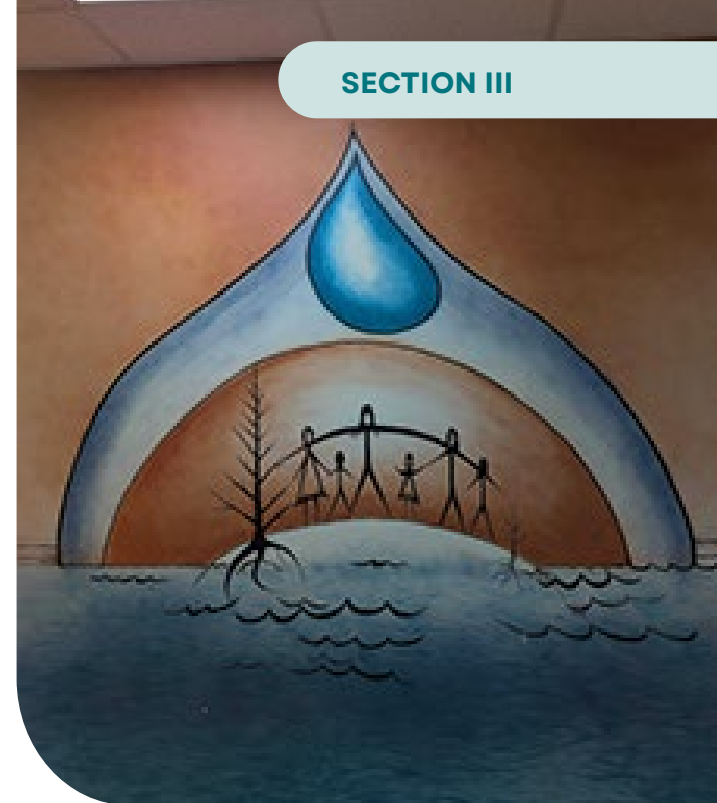
- Demonstrated leadership commitment to positive Indigenous relations
- Has a formal Indigenous Relations Policy in place
- Clear identification of Indigenous Communities of Interest aligned with our operations
- Defined accountability for Indigenous relations within our small business structure
- Has an established, company wide Indigenous cultural awareness and learning process

B. SHARED ENVIRONMENTAL GOVERNANCE & FEEDBACK INTEGRATION

Planetary meets communities in their spaces and on their timelines, showing up in both group settings and one-on-one conversations. We participate in regular meetings and request agenda time to present our work during annual, quarterly, or monthly gatherings convened by representative and community-led bodies. These include the **Atlantic Policy Congress (APC)**, **Collaborative Environmental Planning Initiative (CEPI)**, **Pitu'paq** (Partnership of five municipalities and five First Nations), the **Unama'ki Institute of Natural Resources (UINR)**, **CCIB**, and **Surfrider Club** among others.

By integrating into established governance forums rather than creating parallel consultation processes, Planetary ensures engagement occurs within trusted leadership tables and existing decision-making structures. When communities convene their scheduled meetings, we request appropriate agenda placement, provide structured project updates, and remain present for open dialogue and technical discussion.

These sessions create space for detailed review of feedstock sourcing and mineral composition, environmental monitoring protocols, coastal and fisheries considerations, youth engagement pathways, and other opportunities for collaboration.



Planetary Team Presenting to CEPI



Dr. Will Burt, demonstrating OAE at community gathering



Feedback Integration

Feedback received in these forums has directly informed OAE monitoring enhancements, knowledge-sharing structures, and the development of formal governance pathways such as the **Two-Eyed Seeing** framework.

Fisheries

Engagement with fisheries in Nova Scotia has highlighted the cultural, economic, and ecological importance of lobsters in the region. When we asked fisheries which species they would like us to include in additional testing beyond regulatory requirements, they specifically requested lobsters. In direct response, Planetary implemented the lobster larvae eco-toxicity testing.

Because our work takes place in coastal waters rather than the open ocean, these measures further allayed concerns. This adjustment demonstrates how stakeholder input directly shaped environmental safeguards and reinforced our commitment to responsible, locally informed research.



Lobster Larvae Ecotox Testing

C. COMMUNITY CO-CREATION & BENEFITS

Planetary co-hosted a session with the Mi'kmaq Native Friendship Centre (MNFC) as part of its *Every One Every Day* initiative.

Nearly a year in the making, this collaboration was grounded in relationship building, respect, and shared purpose. Together, we introduced participants of all ages to **Ocean Alkalinity Enhancement (OAE)** in a way that was accessible, meaningful, and community-centered, exploring how ocean health connects to climate resilience and to the lives of people here in Nova Scotia.

To bring the science to life, participants created 'mini oceans' in snow globes, using swirling glitter as a visual metaphor for carbon mixing with ocean water. Through hands-on activities and carbon themed games, people engaged with climate science in a way that was creative and memorable. One young participant summed up the spirit of the day by telling us, *"The work you do is wonderful."*

Moments like this remind us that climate solutions are strongest when they are built not only on science, but on trust, partnership, and genuine community connection.



Youth & Inclusive Workforce Development

Planetary is also advancing broader youth and workforce development pathways connected to ocean climate innovation. In 2025, we initiated collaboration with the Black Business Initiative to explore a **2026 Youth Internship Program** focused on mentorship, climate and marine science exposure, and meaningful work placements for Black-identifying youth. This effort forms part of a wider commitment to building inclusive skills pipelines in partnership with Indigenous organizations, educational institutions, and community groups. By aligning climate innovation with workforce access and economic participation, Planetary is working to ensure that emerging ocean solutions generate opportunity alongside environmental benefit.

D. LOCAL ECONOMIC CONTRIBUTION

Planetary prioritizes sourcing goods and services close to the Tufts Cove project site to strengthen the regional economy. From 2024-2025, approximately **\$2 million CAD** was directed to Halifax-based companies and institutions. This included contracted engineering firms, third-party environmental sample analysis, storage and logistics services, equipment rentals and purchases, ocean monitoring sensors and supplies, vessel charters, temporary accommodation, and other local services. By prioritizing local procurement wherever feasible, Planetary ensures that project investment supports regional businesses, technical expertise, and workforce capacity alongside environmental innovation.

Black Business Initiative



E. INSTITUTIONAL RECOGNITION AT THE LEGISLATURE

On **October 3, 2025**, the Nova Scotia Legislature formally recognized Planetary Technologies. The Honourable Timothy Halman, Minister of Environment and Climate Change, moved a resolution commending Planetary's leadership in climate innovation and ocean-based carbon removal in Nova Scotia ([video](#)).



F. TRANSPARENCY & PUBLIC ACCESS

Transparency remained a foundational principle of engagement in Nova Scotia. Through **open houses** and **guided site tours**, community members were invited to see the project firsthand, ask questions directly to technical staff, and better understand monitoring and safety protocols in place.

Site tours provided a practical view of how the work is conducted in a coastal setting, including equipment, environmental safeguards, and data collection processes. By opening our doors and creating space for dialogue on site, we reinforced our commitment to openness, accountability, and informed public understanding.

35+ site tours



Site Tour for **Confederacy of Mainland Mi'kmaq (CMM)**



Site tour for the **Environment Minister of Nova Scotia Hon. Minister Halman and team**



Hosted the **Halifax PROBUS** group of 30 retired seniors for a site tour and presentation



Hosted various organization & government representatives including **Fisheries and Oceans Canada, and Environment Climate Change Canada**



Mi'kmaq Elder Jim Maloney, COVE and other groups on site with **CEO Mike Kelland**



Site Tour with **Senator Deacon and Team**



G. EXTERNAL VERIFICATION & DUE DILIGENCE

To ensure generation of verified carbon removal credits, Planetary Technologies submits its **Community Engagement Tracker to Isometric's verifier** (350Solutions) on a quarterly basis. Isometric is a carbon removal registry that evaluates and issues credits based on rigorous standards. The tracker documents engagement activities, feedback, grievance and complaints processes, and community inputs integrated into project design. This ensures that Planetary's engagement commitments are actively monitored and continually improved.

In addition, carbon credit buyers such as Frontier, as well as certain suppliers and partners, conduct their own independent community due diligence. These reviews assess stakeholder mapping, diversity, equity and inclusion processes, environmental justice frameworks, community benefits plans, potential social or environmental risks, and in some cases involve direct conversations with community members, local organizations, and regulators.

Together, Planetary's internal reporting and these independent assessments, including work by Indigenous organizations such as Canadian Council for Indigenous Business through the PAIR program provide additional layers of oversight, strengthen trust, improve project design, and ensure that carbon removal projects meet community expectations and evolving market standards.

PLANETARY MILESTONES COMMUNITY CELEBRATION

On **September 12, 2025**, Planetary hosted its first Milestones Community Celebration, bringing together Indigenous leaders, community collaborators, academia and industry partners to reflect on our shared progress. The gathering marked significant milestones, including Planetary's first successful coastal OAE deployment in 2023, the delivery of verified carbon credits in 2024, and the **\$31 million USD Frontier offtake agreement in 2025**. These milestones were all made possible because of these relationships and collective effort.

The day opened with blessings from Mi'kmaq Elder Jim Maloney, grounding the celebration in respect, reciprocity, and connection to the place.

More than a celebration of milestones, the event affirmed that Tufts Cove is not only a site of innovation, but a model for how climate solutions can be built together. Grounded in respect for Mi'kma'ki and strengthened by partnership, this work reflects what is possible when science advances in relationship with community. As we look ahead, the foundation built in Nova Scotia continues to guide us, reminding us that trust is not a milestone reached, but a commitment carried forward.





Elizabeth River
NORFOLK, VIRGINIA

SECTION IV

ELIZABETH RIVER, NORFOLK, VIRGINIA

Land Acknowledgement

Planetary acknowledges that our work at the HRSD VIP facility in Norfolk, within the Elizabeth River watershed, took place on the traditional lands and waters of Tsenacommacah, meaning “*land of many villages*,” the ancestral homeland of the coastal Algonquian peoples of Eastern Virginia.

We honor the Nansemond Indian Nation and the nations of the historic Powhatan Confederacy who have stewarded these lands and waterways for generations. As we advance marine climate solutions in this region, we do so with respect for Indigenous knowledge systems and cultural heritage.

[Inspired by the Land Acknowledgment of the Elizabeth River Project]



REGIONAL CONTEXT

Planetary's work took place at the Hampton Roads Sanitation District (HRSD) Virginia Initiative Plant (VIP) in Norfolk. The facility sits at Lamberts Point on Powhatan Avenue, along the banks of the Elizabeth River (which is part of Chesapeake Bay watershed). Anchoring the project within this established municipal wastewater treatment utility connected it to a trusted civic institution already deeply engaged in regional environmental initiatives. The surrounding neighborhoods have demonstrated leadership in resilience and restoration, actively shaping the river's recovery and broader environmental advocacy.

The Elizabeth River flows through the heart of Hampton Roads in Norfolk. Historically, Indigenous peoples, including the Nansemond Indian Nation, have long stewarded these waters. After decades as one of the Chesapeake Bay's most polluted tributaries, the river is now recognized as a model for urban restoration, driven by sustained collaboration among community leaders, environmental groups, scientists, and public agencies. Organizations such as the Elizabeth River Project (ERP) and the Chesapeake Bay Foundation (CBF), alongside municipal partners, have helped restore oyster reefs and habitats in waters once considered beyond recovery.

Between October 2024 and July 2025, Planetary conducted two separate ocean alkalinity enhancement (OAE) demonstrations at this location. The first deployment lasted one week, and the second lasted four weeks. This work was funded by the National Oceanic and Atmospheric Administration (NOAA). Our scientific partners include, University of Maryland College for Environmental Science (UMCES), and University of Delaware (UD).

We actively worked towards building, engaging, and collaborating with the environmental stewards, non profits, equity-focused organizations, youth groups, multicultural associations, residents, and local government.

SECTION IV



Photo taken at the **Elizabeth River Project Office** in 2025

A. INDEPENDENT COMMUNITY OVERSIGHT

In recognition of the vital stewardship role played by the Elizabeth River Project (ERP) and the Chesapeake Bay Foundation (CBF) in safeguarding the river's health, we engaged both organizations early, transparently, and in a spirit of collaboration.

Structured Oversight & Transparent Review - Elizabeth River Project (ERP)

The Elizabeth River Project (ERP), established in 1991, is the leading nonprofit dedicated to restoring and safeguarding the health of the Elizabeth River. Recognized as the **river's guardian**, ERP brings together scientific rigor, policy engagement, and community leadership to drive measurable environmental recovery.

Technical Policy Committee Review

Central to ERP's work is its Technical Policy Committee (also composed of scientific experts), whose duties include evaluating public positions on matters with the potential to significantly impact the river's health, assessing major new technical programs, and projects relating to the river. In recognition of this oversight function, we voluntarily presented our work before, during, and after each deployment to the committee, ensuring that our work and data was reviewed at each stage.

Site Visits

During deployment, both ERP and National Oceanic and Atmospheric Administration (NOAA) conducted a site visit, reinforcing transparency and establishing strong civic and governmental oversight.



ERP member giving Planetary and community members a tour of the Ryan Resilience Lab



ERP and NOAA visit Planetary's site at HRSD VIP facility at Norfolk, 2024

B. COMMUNITY COLLABORATION & OVERSIGHT

Chesapeake Bay Foundation (CBF), Hampton Roads, Virginia

The Chesapeake Bay Foundation (CBF) is a well recognized organization in environmental conservation, combining science, policy, and community engagement to protect and restore the Chesapeake Bay that includes Elizabeth River. CBF is one of the most respected environmental voices in the region. Its work spans habitat restoration, water quality monitoring, advocacy, and public engagement, including litigation to both enforce environmental laws and to hold polluters accountable. Our collaboration with CBF reflects a shared commitment to protecting the Bay and empowering communities through climate and environmental education.



Planetary Team at **Brock Environmental Center**
with CBF leadership team

Public Climate Education Annual Series 2025:

From March to November 2025, Planetary became a sponsor of CBF's flagship monthly climate lecture series, held at Brock Environmental Center. The series convened approximately 100 community members per session every month and featured expert speakers.

The series, launched with U.S. Senator Tim Kaine, featured state and federal leaders, including Delegates Phil Hernandez and Michael Feggans, former Governor Ralph Northam, Chief Keith Anderson, and Congressman Bobby Scott.



The sessions also included Indigenous leaders such as **Chief Frank Adams of the Upper Mattaponi Tribe**, **Dave Hennaman III of the Nansemond Indian Nation**, and **Joe Capella, Natural Resource Director of the Pamunkey Indian Tribe**. Sponsoring and participating in the series allowed Planetary to support broader public dialogue on climate solutions while ensuring community and Indigenous members had direct access to information on our work in Norfolk.

Education & Youth Engagement:

We explored hands-on marine and climate education initiatives for high school students, aligning restoration science with workforce awareness and environmental literacy.

Transparency & Scientific Exchange:

We shared deployment plans, monitoring data, and technical findings with CBF and its scientists.

Celebrating XPRIZE with CBF:

Among over **1,300 teams**, Planetary was one of six companies selected as the XPRIZE Award recipient for advancing Ocean Alkalinity Enhancement (OAE) technology and demonstrating measurable, verifiable carbon removal. We were proud to be joined by a representative from the CBF, alongside our partners including NSPI, at the award ceremony in New York, marking an important milestone in collaborative climate action.

Oyster Restoration Collaboration

Building on the Chesapeake Bay Foundation's leadership in oyster reef recovery, we discussed potential joint initiatives exploring the intersection of Ocean Alkalinity Enhancement (OAE) and oyster restoration. Planetary was also honored to join Chris Moore (Executive Director) on a boat tour, during which he and his team described CBF's restoration efforts and mission to bring communities together.



Photos above from **CBF boat tour** organized for the Planetary team



C. ENGAGEMENT WITH LOCAL GOVERNMENT & CIVIC BODIES

Elected Officials

Planetary's engagement in Hampton Roads includes regular meetings with local elected officials and civic institutions responsible for environmental stewardship and community wellbeing. In 2025, the team met with key public leaders, including **Mayor Kenneth Alexander**, **Senator Angelia Williams Graves**, **Delegate Jackie Glass**, and **Delegate Phil Hernandez**, to provide updates on the project and discuss regional climate priorities.



City-Led Initiatives

Planetary also met with the Norfolk Environmental Commission, where members offered supportive feedback and encouraged continued transparency as the project continued to develop.

Planetary participates in city-led education and learning initiatives. The company is a partner in **Believe in Learning Norfolk**, a citywide initiative led by Norfolk City Council that connects more than **100 community, business, and educational organizations** that are working to expand lifelong learning opportunities. Through this platform, Planetary is able to share climate education resources, list public events on the City of Norfolk website, and participate in community showcases.



Community & Civic Organizations

Beyond government engagement, Planetary has built relationships with a network of over **25 regional environmental and civic organizations** that play an important role in local stewardship and community education. These include organizations such as **Lynnhaven River NOW (LRNow)**, **Friends of Lamberts Point City Park**, **Keep Norfolk Beautiful**, and the **League of Women Voters** and other groups deeply connected to local waterways, parks, and environmental advocacy.

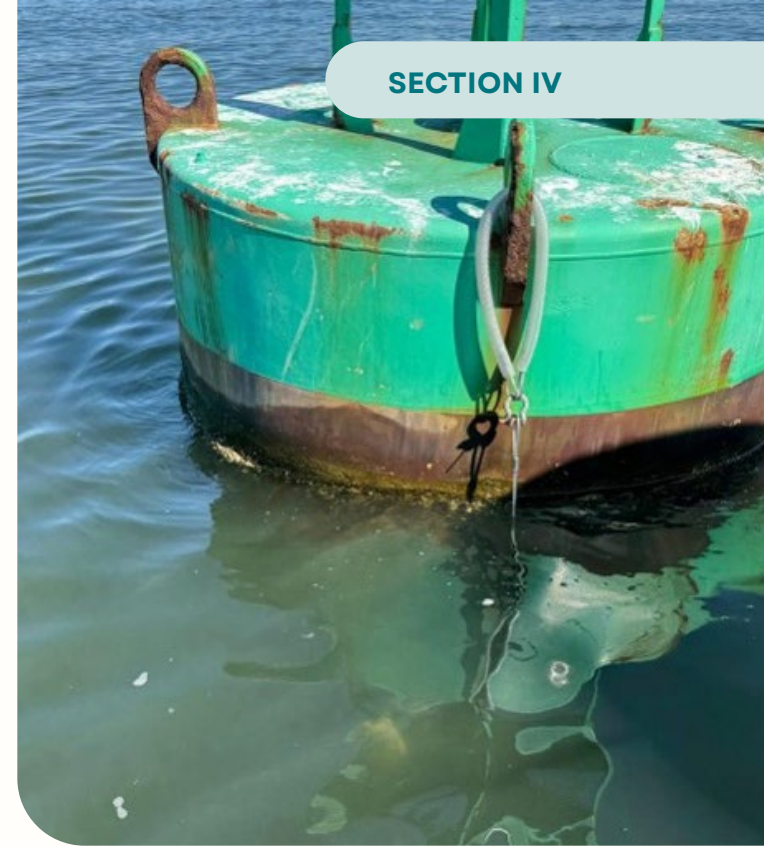


D. FEEDBACK INTEGRATION

Oysters hold deep ecological, cultural, and economic significance in Virginia's coastal waters, including the Elizabeth River and the wider Chesapeake Bay. Knowledge of this significance helped inform the development of the project plan. During our engagement with community members and local environmental groups in the Hampton Roads region, we repeatedly heard how central oyster restoration is to the region's identity and to ongoing efforts to improve water quality. This feedback reinforced the importance of continuing these activities in a way that is meaningful to the community. By monitoring oysters from the start, alongside our research activities, we aimed to track the health of a species that is both ecologically important and locally meaningful, while aligning our work with the broader restoration priorities of the Elizabeth River and Chesapeake Bay communities.

E. LOCAL ECONOMIC CONTRIBUTION

Planetary prioritizes sourcing goods and services close to the project site to strengthen the regional economy. In 2024-2025, approximately **\$1 million CAD** was directed to Virginia-based companies and institutions. This included contracted engineering firms, third-party environmental sample analysis, storage and logistics services, equipment rentals and purchases, temporary accommodation, sponsorship of community events and other local services. By prioritizing local procurement wherever feasible, Planetary ensures that project investment supports regional businesses, technical expertise, and workforce capacity.



F. OUTREACH & PUBLIC ACCESS

Institutional trust means little without public accessibility. Planetary partnered with the **Elizabeth River Trail Foundation (ERTF)**, a nonprofit dedicated to planning, programming, and advocating for the **10.5-mile Elizabeth River Trail** connecting communities across Norfolk and Virginia Beach. These events created opportunities for residents to interact directly with the project team and ask questions about monitoring, safety, and environmental safeguards.

Community Trails Day: OAE Showcase to Lamberts Points Residents

In April 2025, ERTF hosted Community Trails Day at Lambert's Point, bringing together over **50 residents**, including **Delegate Jackie Glass**. Attendees participated in dialogue, exploration, and hands-on activities. Planetary demonstrated their Ocean Alkalinity Enhancement (OAE) work during the event, providing an interactive opportunity for residents to learn about environmental restoration, while fostering transparency and local community trust in our science.

50+ community residents brought together





SECTION IV

66 Thank you so much for shining a light on our work and Foundation. We appreciate all you do to amplify climate resilience! 99

Elizabeth River Trail Foundation





GUIDED TOUR OF PLANETARY'S CARBON REMOVAL PROJECT

Planetary partnered with the Elizabeth River Trail Foundation to host a guided community tour of our carbon removal project at the HRSD Virginia Initiative Plant in Norfolk. Participants from all walks of life explored the project site, learned how Ocean Alkalinity Enhancement safely removes carbon and rebalances river chemistry, and engaged directly with Planetary's experts. Many attendees shared their excitement for the project and expressed interest in seeing these efforts scale up in Norfolk.



Digital Transparency

& KNOWLEDGE
SHARING

SECTION V

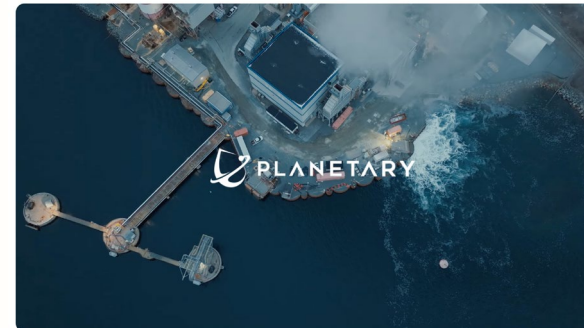
DIGITAL TRANSPARENCY & KNOWLEDGE SHARING

Planetary leverages digital platforms to ensure communities, partners, and the broader public can easily access information about our projects. Through our [website](#), [FAQs](#), articles, [blogs](#), press releases, [newsletters](#), [impact reports](#), podcasts, webinars, [videos](#), [YouTube](#), and social media, we regularly share updates on project activities, operational milestones, and the science behind ocean alkalinity enhancement. Key technical documentation, including the Project Development Document (PDD) prepared for Isometric verification, is [publicly available](#) to support transparency around project methodology, monitoring, and verification.



When The Ocean Meets Us: Community in Carbon Removal

[View here](#)



Planetary Technologies: Protecting and Restoring the Ocean and Climate for Generations to Come

[View here](#)



[View our
Impact Report](#)

Project documentation

Submission date	Title	Download
31 Mar 2026	Monitoring and Operations Report	PDF ↗
27 Mar 2026	PDD	PDF ↗
27 Mar 2026	GHG Statement Report	PDF ↗
27 Mar 2026	Verification Report	PDF ↗
12 Dec 2025	Monitoring and Operations Report	PDF ↗

Showing 5 of 16 ← Previous Next →

[Planetary Project Documents available Online on Isometric Carbon Removal Registry](#)

Digital channels also provide clear pathways for communities to ask questions, submit feedback, or raise concerns through dedicated contact and complaints procedures. Together, these platforms extend transparency beyond in-person engagement and reach over **200,000 people** annually, supporting broader public understanding of ocean climate solutions.

200,000+ Reached Annually



Featuring **Crystal Nichola**, President, Wskijinu'k Mtmotaquow Agency (WMA), Nova Scotia

Breaking Ground, Making Waves Speaker Series:

The Breaking Ground, Making Waves speaker series features community leaders, Indigenous leaders, and environmental practitioners from project regions. The series provides a platform to elevate community voices, share local knowledge, and highlight leadership in environmental stewardship.

Community Engagement

AS AN ORGANIZATIONAL PRACTICE



SECTION VI

COMMUNITY ENGAGEMENT AS ORGANIZATIONAL PRACTICE

Community engagement at Planetary is led with intention and embedded across the organization. While guided by dedicated leadership, building trust is a shared responsibility. From executive leadership setting expectations for transparency, to equitable hiring practices, to scientists dedicating time to public dialogue, and site operations teams ensuring safe and welcoming access. Meaningful engagement is not siloed; it is a collective effort across the Planetary team.



Mike Kelland
Chief Executive Officer,
Co-Founder & Board
Member



Dr. Greg Rau
Senior Scientist &
Co-Founder



Jane Kearns
Board Member
(Evok Innovations)



Diana Philip
VP of Community and
Govt Relations



Dr. Will Burt
VP Science and
Product



Kelsey Cuddihy
VP Internal



Vincent Willis
VP Project
Development



Eric Christmas
Senior Advisor-
Indigenous Affairs



Mariam Melashvili
Senior Process
Engineer



Steve Rackley
Scientific Advisor



Tim Cross
Regulatory Lead



Robert Izett
Ocean Technology
Developer



Dhruv Mehta
Project Manager



Aaron Olson
Lead Platform
Software Developer



Max Holloway
Ocean Modeller



Mackenzie Burke
Lab & Field Tech



Tia Chai
R&D Chemis



Maksim Voloshin
Site Operator



Isaac Olalere
Site Supervision



Anas Khalid Khan
Site Operator



**Rebecca
Cunningham**
Site Operator



Myles McNaughton
Site Operator



Alex Whitworth
JLO Ambassador /
Site Operator



Phoenix Seelochan
Policy and Community
Relations Intern



Haley Olson
Principal Metallurgist



Michael Lai
Site Operator

ACKNOWLEDGMENTS

We honor and thank the First Nations who steward these lands and waters: the **Mi'kmaq Nation in Nova Scotia** and the many Mi'kmaq organizations including the **Confederacy of Mainland Mi'kmaq, Atlantic Policy Congress, the Collaborative Environmental Planning Initiative (CEPI), Pitupaq, the Mi'kmaq Native Friendship Centre, the Unama'ki Institute of Natural Resources (UINR), and Ulnooweg**. Their wisdom taught us the importance of listening before acting. We also thank **Ralph Eldridge of Ocean Super Cluster (OSC)** for his guidance and support.

We thank our outfall partners, **Nova Scotia Power (NSPI), Tufts Cove and the Hampton Roads Sanitation District (HRSD), Virginia Initiative Planet (VIP), Norfolk,** who opened their facilities not just to our equipment, but to curious neighbors, students, and residents. In doing so, they trusted us with their communities.

We are grateful to our academic partners: **Dalhousie University, the University of Maryland Center for Environmental Science (UMCES), and the University of Delaware,** for grounding our work in rigorous inquiry and helping communities gain a clearer understanding of the project.

We thank our consultants, **Dillon Consulting Ltd.,** for their regulatory insights, and **Spotts Fain Virginia,** particularly **Meade Spotts, Olivia Saunders, and Darren Hayes** for their invaluable guidance on local government and governance processes.

This work exists because communities welcomed us in.

We are grateful to the environmental advocates and nonprofit organizations, particularly the **Elizabeth River Project (ERP), the Chesapeake Bay Foundation (CBF), and the Elizabeth River Trail Foundation (ERTF).** **Thank you for your fierce guardianship of these waters and for allowing us to learn alongside you.**

We extend our thanks to **local, provincial/state, federal governments and regulators** who engaged with us in good faith, helping ensure our work met both community expectations and environmental safeguards. To the fishers who shared their local knowledge, the youth who brought fresh eyes and hard questions, and all those who stayed to talk: thank you! You reminded us that restoration is not merely a technical process, but a collective act of care, patience, and stewardship.

Finally, we thank **El'taqati'kw Digital Studio** for weaving Indigenous cultural and visual wisdom throughout these pages, ensuring this report honors the territories and voices it represents.



EL'TAQATI'KW DIGITAL STUDIO: INDIGENIZING THE REPORT

We thank **El'taqati'kw Digital Studio** of the Mi'kmaq Confederacy of PEI for their invaluable contribution in bringing an Indigenous perspective to this report. Through their creativity, technical skill, and dedication, they wove Indigenous visual elements throughout these pages. Their work ensures this report does not merely document our efforts, but honors the voices, stories, and heritage of Indigenous communities across Mi'kma'ki in Nova Scotia and Tsenacommacah in Virginia. By embedding Indigenous visual perspectives into the report design, they helped us communicate with the same cultural integrity we strive to bring to our on-the-ground relationships.

We are deeply grateful for their role in ensuring this story is told through Indigenous eyes.

About the Studio

El'taqati'kw (*meaning "we create" – pronounced, el da ha dee gwa*) Digital Studio is an Indigenous social enterprise of the Employment Services Department at the Mi'kmaq Confederacy of PEI. The studio is an on-the-job learning space where team members build digital skills, including graphic design, while also enhancing their creativity, cultural knowledge, and understanding of technology.

The studio creates authentic, story-driven work – from logos and social media templates to print materials, apparel, banners, interpretive panels, stickers, and 3D-printed items such as charms and ornaments.

In addition to Planetary Technologies, the studio has also completed work for Parks Canada, PEI Symphony Orchestra, L'nuey, the Mi'kmaq Confederacy of PEI, Indigenous PEI, and several non-profit organizations.



Design Description

The designs in this engagement report are an ode to the First Peoples of Turtle Island, and particularly to the Mi'kmaq. The art is inspired by Mi'kmaq rock drawings, or petroglyphs, found in Kejumkujik National Park in ula maqamikew kiskuk telui'tasik No'pa Sko'sia (more recently known as Nova Scotia), which is part of Mi'kmaki, the ancestral and unceded territory of the Mi'kmaq.

These petroglyphs are visual records of Mi'kmaq life, capturing what people saw and experienced around them. They depict human figures, animals, daily activities such as hunting and fishing, as well as elements of culture, travel, and traditional clothing.

Tracings of the original petroglyphs can be found in the Nova Scotia Archives. **View archives:** archives.novascotia.ca/creed/

Some of the designs in this report are adapted from original petroglyph tracings, while others are creations inspired by the style, form, and storytelling traditions of Mi'kmaq petroglyphs.

DESIGN EXAMPLE EXPLANATION

Some of the designs in this report are adapted from original petroglyph tracings. Others are creations inspired by the style, form, and storytelling traditions of Mi'kmaq petroglyphs. While still others blend both original petroglyph tracings into newly created designs.

The mermaid design - an ode to the Parade of Mermaids in Norfolk, Virginia - is one such example. This design incorporates petroglyph-inspired scales, decorative motif, and star. The mermaid's tail also features the Mi'kmaq double curve, a symbol often associated with balance in life.



Thank you

Wela'lioq

Merci

